

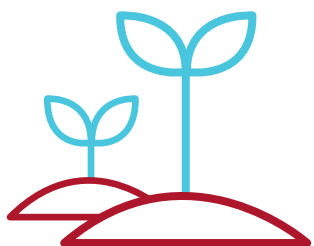
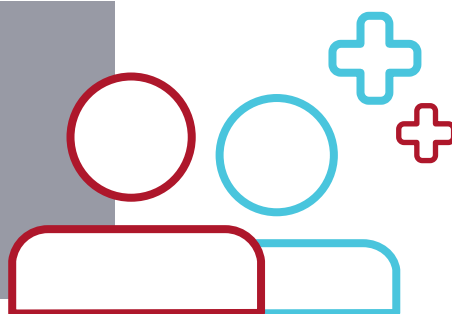
Behind everything we do is a devotion to reducing the spread of infection.



PDI offers a multi-layered suite of solutions to fight Healthcare Acquired Infections (HAIs) and Community Acquired Infections (CAIs). There are three interrelated focal pillars that guide our reporting on the social and environmental issues most significant to our business and stakeholders.

1

Advancing the health, safety, and wellbeing of our associates, our customers, consumers, and communities through our products, workplace standards, and social and ethical standards.

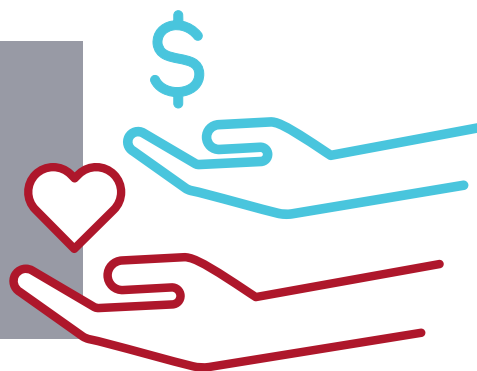


Sustaining our environment through innovation and continuous improvement across all stages of the product life cycle.

2

3

Educating and supporting communities economically and socially with an unwavering commitment to improving every life that we touch.



REPORT HIGHLIGHTS*



Overall energy use intensity has decreased by 8.3% since 2016.

Greenhouse gas emissions intensity reduced by 6.4% since 2016.



Water use intensity has decreased by 9% since 2016.

5 out of 6 manufacturing facilities are zero landfill.



20% of global renewable energy was generated by on-site solar panels.

Sites worldwide achieved industry-leading safety performance with Total Recordable Incident Rates (TRIR) < 1.0 every year from 2016-2019.



Charity and volunteerism: Over \$1.5 million donated to charities. Associates volunteered for more than 70 organizations globally.

Visit [wearepdi.com/csr](https://www.wearepdi.com/csr) for more information.